

AuD WiSe 24/25 Klausur Ergebnisse

Ergebnisse

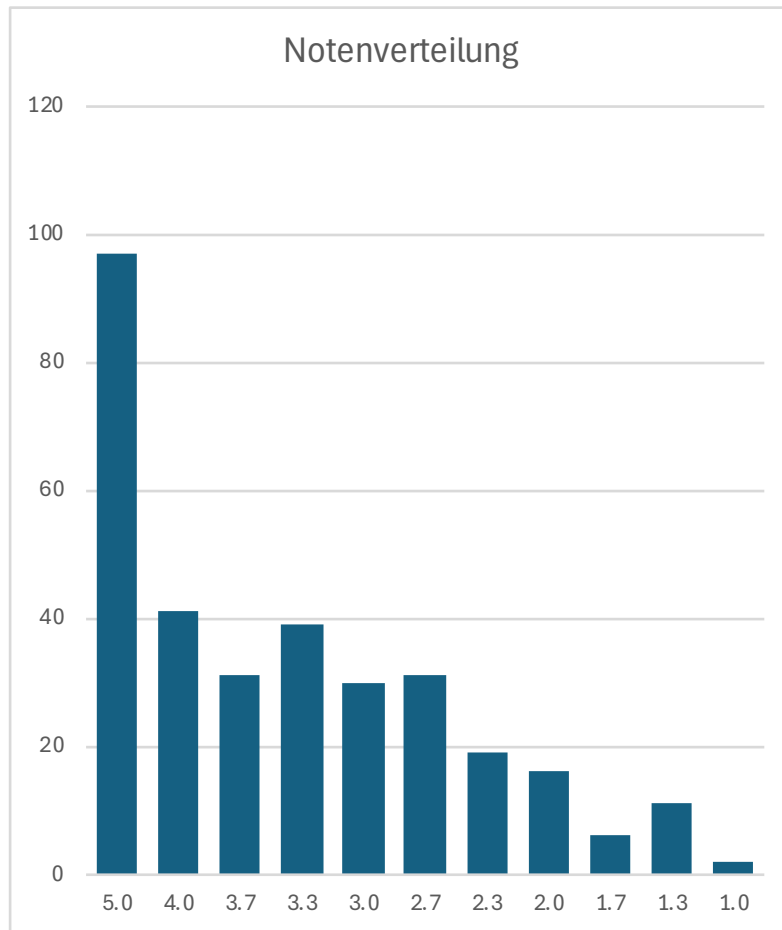
Code	Punkte	Note
3205	29	5.0
3206	38	5.0
3207	27.5	5.0
3208	87.5	1.7
3209	92.5	1.3
3210	27.5	5.0
3211	56.5	3.7
3213	54	3.7
3214	62.5	3.3
3215	31	5.0
3216	78	2.0
3217	67.5	3.0
3218	58.5	3.3
3219	56	3.7
3220	66	3.0
3221	85	1.7
3222	44	5.0
3223	48.5	4.0
3224	61	3.3
3225	77.5	2.3
3226	35	5.0
3227	43.5	5.0
3228	44	5.0
3229	44.5	5.0
3230	35.5	5.0
3231	83	1.7
3232	57.5	3.7
3233	57.5	3.7
3234	59.5	3.3
3235	44	5.0
3236	62.5	3.3
3237	53.5	3.7
3238	45	5.0
3239	81	2.0
3240	49.5	4.0
3241	44	5.0
3242	50.5	4.0
3243	29.5	5.0
3244	65	3.0
3245	86.5	1.7
3246	72	2.7
3247	52	4.0
3248	51.5	4.0
3249	41.5	5.0
3250	77.5	2.3
3251	63.5	3.0
3252	68	2.7
3253	72.5	2.7
3254	72.5	2.7
3255	78	2.0

Notengrenzen

Punkte	Note	#Studis
bis 47.5	5.0	97
ab 48	4.0	41
ab 53	3.7	31
ab 58	3.3	39
ab 63	3.0	30
ab 68	2.7	31
ab 73	2.3	19
ab 78	2.0	16
ab 83	1.7	6
ab 88	1.3	11
ab 93	1.0	2

Bestehensquote: 70.0%

Alle Angaben sind ohne Gewähr.



3256	68.5	2.7
3257	73	2.3
3258	63.5	3.0
3259	30.5	5.0
3266	38	5.0
3267	68.5	2.7
3268	72	2.7
3269	83.5	1.7
3270	61.5	3.3
3271	71	2.7
3272	54.5	3.7
3273	61	3.3
3274	25.5	5.0
3275	66	3.0
3276	30.5	5.0
3277	26.5	5.0
3278	46	5.0
3279	71	2.7
3280	29	5.0
3281	34.5	5.0
3282	12.5	5.0
3283	45	5.0
3284	18.5	5.0
3285	65	3.0
3286	71	2.7
3287	80	2.0
3288	55	3.7
3289	74	2.3
3290	63.5	3.0
3291	57.5	3.7
3292	50	4.0
3293	49	4.0
3294	64.5	3.0
3295	79.5	2.0
3296	40.5	5.0
3297	53.5	3.7
3298	71.5	2.7
3299	64	3.0
3300	48	4.0
3301	31.5	5.0
3302	37.5	5.0
3303	29	5.0
3304	23.5	5.0
3305	73	2.3
3306	73.5	2.3
3307	80.5	2.0
3308	43.5	5.0
3309	43	5.0
3310	38	5.0
3311	81.5	2.0
3312	26	5.0
3313	10	5.0
3314	65	3.0
3315	40.5	5.0
3316	66.5	3.0
3317	45	5.0

3318	58.5	3.3
3319	53.5	3.7
3320	37	5.0
3321	81.5	2.0
3322	64	3.0
3323	68.5	2.7
3324	75	2.3
3325	49.5	4.0
3326	54	3.7
3327	63	3.0
3328	51	4.0
3329	55.5	3.7
3330	54	3.7
3331	28	5.0
3332	39.5	5.0
3333	48	4.0
3334	51	4.0
3335	48	4.0
3336	54.5	3.7
3337	56	3.7
3338	49	4.0
3339	53.5	3.7
3340	48.5	4.0
3341	42.5	5.0
3342	49	4.0
3343	46	5.0
3344	56.5	3.7
3345	59	3.3
3346	66	3.0
3347	74	2.3
3348	71.5	2.7
3349	56	3.7
3350	63.5	3.0
3351	90	1.3
3352	59.5	3.3
3353	86.5	1.7
3354	72.5	2.7
3355	77	2.3
3356	66.5	3.0
3357	68	2.7
3358	63	3.0
3359	78	2.0
3360	14.5	5.0
3377	61.5	3.3
3378	91.5	1.3
3379	62.5	3.3
3380	48	4.0
3381	74	2.3
3382	70.5	2.7
3383	73.5	2.3
3384	2	5.0
3385	5	5.0
3386	54	3.7
3387	17.5	5.0
3388	32.5	5.0
3389	59	3.3

3390	29.5	5.0
3391	45.5	5.0
3392	72.5	2.7
3393	41	5.0
3394	67	3.0
3395	70.5	2.7
3396	51.5	4.0
3397	54.5	3.7
3398	20	5.0
3399	63.5	3.0
3400	66.5	3.0
3401	33.5	5.0
3402	50.5	4.0
3403	12.5	5.0
3404	38.5	5.0
3405	44.5	5.0
3406	65	3.0
3407	68.5	2.7
3408	14	5.0
3409	76	2.3
3410	38	5.0
3411	59.5	3.3
3412	71.5	2.7
3413	37	5.0
3414	48.5	4.0
3415	74	2.3
3416	89.5	1.3
3417	52	4.0
3422	60.5	3.3
3423	34	5.0
3432	56	3.7
3433	29	5.0
3434	52.5	4.0
3435	43	5.0
3436	89.5	1.3
3437	64.5	3.0
3438	73.5	2.3
3439	94	1.0
3440	59	3.3
3441	43	5.0
3442	71	2.7
3443	78.5	2.0
3444	64	3.0
3445	48	4.0
3446	60	3.3
3447	45	5.0
3448	59	3.3
3449	14.5	5.0
3450	89	1.3
3451	73	2.3
3452	71.5	2.7
3453	58	3.3
3454	61	3.3
3455	52.5	4.0
3456	62.5	3.3
3457	79.5	2.0

3458	56	3.7
3459	51.5	4.0
3460	37.5	5.0
3461	61	3.3
3462	88	1.3
3464	58	3.3
3465	48	4.0
3469	37.5	5.0
3470	53.5	3.7
3471	43	5.0
3472	36.5	5.0
3473	24	5.0
3474	80.5	2.0
3475	50	4.0
3476	79.5	2.0
3477	33	5.0
3478	77	2.3
3479	34.5	5.0
3480	71.5	2.7
3481	89	1.3
3482	48.5	4.0
3483	49.5	4.0
3484	61	3.3
3485	48	4.0
3486	65.5	3.0
3487	62	3.3
3488	93.5	1.0
3489	38	5.0
3490	62.5	3.3
3505	27	5.0
3506	49.5	4.0
3507	8.5	5.0
3508	59.5	3.3
3509	32.5	5.0
3510	53.5	3.7
3511	55	3.7
3512	50.5	4.0
3513	68.5	2.7
3514	50.5	4.0
3515	58.5	3.3
3516	63	3.0
3517	20	5.0
3518	42	5.0
3519	0	5.0
3520	73	2.3
3521	64	3.0
3522	50.5	4.0
3523	72.5	2.7
3524	42.5	5.0
3525	77	2.3
3526	38.5	5.0
3527	49.5	4.0
3528	82	2.0
3529	61.5	3.3
3530	65	3.0
3531	48	4.0

3532	79	2.0
3533	58	3.3
3534	70.5	2.7
3535	57.5	3.7
3536	60.5	3.3
3575	33.5	5.0
3576	35	5.0
3577	35	5.0
3578	58	3.3
3579	52	4.0
3580	39	5.0
3581	53	3.7
3582	52	4.0
3583	16	5.0
3584	49.5	4.0
3585	54	3.7
3586	58.5	3.3
3587	72.5	2.7
3588	41.5	5.0
3589	89.5	1.3
3590	69	2.7
3591	90.5	1.3
3592	58	3.3
3593	62.5	3.3
3594	66.5	3.0
3595	81.5	2.0
3596	66	3.0
3597	88	1.3
3598	21	5.0
3599	69	2.7
3600	77.5	2.3
3601	43.5	5.0
3603	42	5.0
3604	58	3.3
3605	54.5	3.7
3606	49.5	4.0
3607	70	2.7
3609	26.5	5.0
3610	42	5.0
3611	43	5.0
3612	33.5	5.0
3613	37.5	5.0
3614	32	5.0
3615	59.5	3.3
3616	51	4.0
3617	55	3.7
3618	60	3.3
3619	59	3.3
3620	69.5	2.7